

ESHER CRICKET CLUB



ESHER CRICKET CLUB CENTENARY YEAR

A Short History of
ONE HUNDRED YEARS OF CRICKET

1863

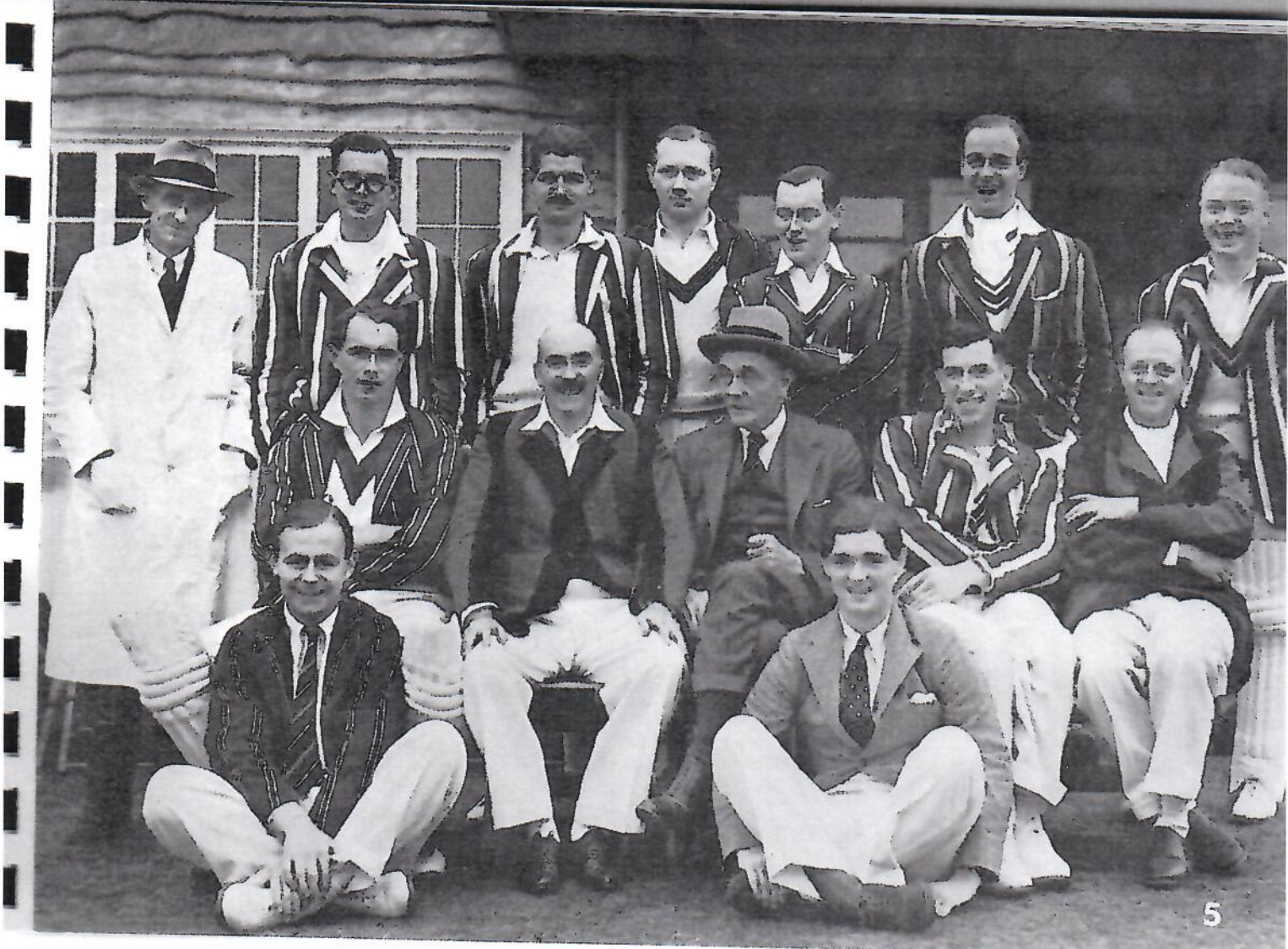


1963













THE Esher Cricket Club was formed at a meeting held at the Esher Schoolroom on October 9th, 1863, when W. G. (later SIR WILFORD) BRETT was elected President and £45 promised to meet the formation expenses.

During that winter an area of sixty yards square was levelled in a manner fit for cricket for £65 in Mr. BRETT's field adjoining the Portsmouth Road. The first match was played on May 7th, 1864 and record exists of a win over Hampton Wick by 17 runs in 1865.

In 1868 builders took over the original field and the present ground in New Road was then rented for £20 per annum and opened on May 15th, 1869. The year 1871 marked the erection of a one-roomed pavilion which did service until 1937.

Page 2 shows the Old and New Pavilion standing together in 1937 and page 3 Esher's tree-ringed ground pictured in 1933. On the right is one of the four poplars—now recumbent from age, whose majesty towered over the ground for many years.

The Club owes a great debt to the MARTINEAU family—not only for the modest rental of the field—only increased to £30 in 1920—but for the friendly price at which the ground—a valuable building site—was purchased in 1935.

Apart from their playing interest, six MARTINEAUS turned out for the Club in 1889. P.M. and CHARLES MARTINEAU, Father and Son, were President from 1873 to 1935 except for the period 1881 to 1884 when H.R.H. PRINCE LEOPOLD, DUKE OF ALBANY, held that office. There have only been seven Presidents throughout the 100 years.

In 1880 BOWLER became the groundsman, a post he held right up to 1914 and we owe much to the three men, each of different personality, who have held that position for a long time, WOODS between the two wars, and RANGLES our present groundsman and Steward.

The fixture card of 1878 records 21 matches—including THE MARYLEBONE CLUB (now better known as the M.C.C.) I ZINGARI ; BUTTERFLIES ; HARROW WANDERERS ; UPPINGHAM ROVERS ; MARLBOROUGH NOMADS ; and sides we now play RICHMOND and OATLANDS PARK. But ASSYRIANS ; WILL OF THE WISPS ; ORLEANS AND BROADWATER are no longer. 1886 includes FREE FORESTERS and INGOGNITI and there were some two-day matches.

With a fixture list of such strength it is natural that many well-known cricketers are found in the side, A. P. LUCAS (5 Tests against Australia) averaging 111 in 1889 ; S. A. P. KITCAT (Glos.) 64 in 1894. who shared many stands with W. G. GRACE and was President from 1936 to 1942, R. P. SEWELL (Essex) averaged 78 in 1896 and LESLIE WILSON (Kent) 73 in the same year.

Around the turn of the Century W. H. GAME and G. A. TROUNCER of Surrey ; G. BIRD (Lancs.) ; E. C. MORDAUNT (Middlx.) and GEORGE BRANN (Sussex) were found in the side. Two families also famous in Esher history are the CLARKES and PEACHEYS one or other of whom was Secretary from 1870 to 1908. The 1914 WISDEN lists in its Births and Deaths—the Who's Who of Cricket—G. B. PEACHEY (Esher C.C.) and M. G. and G. C. CLARKE (Surrey and Esher C.C.) which indicates something of the prestige of the Club at that time.

It is said that the Esher colours—now harmonised in the tie, of Green-Yellow-Blue-Red and White were the result of each of the young CLARKE children choosing a colour.

Another Esher stalwart was TOM WESTRAY—Treasurer 1900 to 1914—who played for England against Ireland in the first Hockey International.

The first decade of the 20th Century finds E. A. C. DRUCE (Kent) J. H. HUNT (Middlx.) M. C. BIRD (Surrey) who scored two hundreds for Harrow against Eton in 1907, and H. H. MARRIOTT (Leicester) playing when free from county responsibilities, while the brothers HOWELL—JOHN (killed in the war) and MILES were young products of Esher.

It is interesting that some of the Australian tourists—perhaps the programme was then less arduous—played for Esher. In 1899 M. A. NOBLE and F. LAVERS scored centuries against THAMES DITTON and V. TRUMPER and H. TRUMBLE also took part. In 1902 W. W. ARMSTRONG, A. J. HOPKINS, R. A. DUFF and H. CARTER assisted Esher.

The lights went out over Europe in August 1914 and Esher Cricket was silent until 1921.

Membership had been reduced to such small proportions by the Great War that it was decided to amalgamate with the Esher Village Cricket Club, which for many years had played on the Green, and an Esher Sports Club was formed to which the Cricket and Esher Village Tennis and Football Clubs were affiliated.

Until 1927 the Football Club played right over the Square and for this and other reasons Cricket was but a shadow of its old self.

With the purchase of the ground, previously referred to, in 1935 the Sports Club was wound up but the Village Tennis Club under amicable arrangements have remained our tenants.

The Agreement of Sale contains the condition that the ground shall be preserved as a Sports Ground in perpetuity and the Esher Council have made an order by which the land then purchased, $5\frac{1}{4}$ acres, is scheduled under the Town Planning Scheme as a Private Open Space.

By 1932 when 32 matches out of 54 played were won, the Club had returned to its old strength and fixture list and in 1938 and 1939 were honoured by a match against Surrey 2nd XI.

Those who played a big part in the revival and also played for the Surrey Minor County side were H. A. PACKHAM—a wonderful judge of a short single; R. J. WOOLLATT—with his classic offside strokes on firm wickets; H. R. CROUCH—an all-rounder whose figures speak for themselves, who scored 1312 runs with an average of 62 in 1933—his first season after leaving school. In this season he claimed the Club's only recorded Double Century 206 not out against Hampstead; B. J. A. LOWE—a powerful

leg side player with a sound defence. Last but not least the EGLINGTON Brothers—R. (Dick) an opening bat who skippered Surrey II to the Minor Counties Championship in 1939 and his brother R. C. (Bob) an all-rounder credited with the longest straight drive in recent years who although not playing for the County has done and continues to do so much for Esher.

Others who helped the Club at this time—all internationals in other spheres—were K. L. T. JACKSON; J. C. HUBBARD and G. T. HOLLEBONE and at the close of the thirties the Club could have put in the field an XI of FREE FORESTERS.

Behind the scenes much is owed to those who have passed on. H. O. CROWTHER (Secretary) L. E. LANGLEY (Team Secretary and later Secretary) and T. A. RYDER (Treasurer) with S. A. P. KITCAT an active Chairman and later President.

There was a Cricket Week from 1927 to 1935 and Sunday Matches were first arranged for 1930.

The previous year a COLTS CLUB was founded by M. A. KITCAT and J. E. B. HILL now M.P. for a Norfolk constituency. More about this activity later.

Another to remember is A. JENKINS who after a long career took over the 2nd XI for 8 years and who when his playing days were over, stood so willingly as Umpire.

Four Charity matches were played against County Players during this time—organised by S. A. BLOCK (Surrey) who occasionally played for Esher, in 1933 and 1935 and by B. H. LYON (the famous Gloucester Captain) in 1936 and 1938.

It must be confessed that Club funds were largely the charity concerned but the interest was considerable and in 1938, 2147 spectators actually paid for admission. An Esher player S. C. BOSTOCK played a big part in these arrangements, his name appears in WISDEN as scorer of 419 in a House match at Winchester.

These matches introduced to the Club L. N. (now Sir Learie) CONSTANTINE who not only gave his services for three similar matches after the war but as an Honorary Life Member turned out 6 times for his Club. The last occasion—the day before his fifty-seventh birthday—on a dark September day he showed much of his old mastery in an innings of 47 against BYFLEET.

As any history is dull without the record of at least one match we have set down the score of the 1938 Charity fixture. The visitors should have been trying as BEV LYON had wagered the Esher skipper a level fiver that the home side would be out within two hours.

The sides taking part in this match are photographed on pages 4 and 5. Names (left to right).

B. H. LYON'S XII

W. L. NEALE ; E. W. BROOKS ; B. O. ALLEN ; J. GODDARD ; L. N. CONSTANTINE ; P. S. CLARKE ; A. E. WILSON ; W. R. HAMMOND ; P. G. H. FENDER ; B. H. LYON ; N. HAIG ; R. SINFIELD.

ESHER

BURNS (Umpire) ; J. C. HUBBARD ; R. J. WOOLLATT ; B. J. A. LOWE ; R. C. EGLINGTON ; K. L. T. JACKSON ; G. T. HOLLEBONE ; H. R. CROUCH ; W. E. GERRISH (Capt.) ; S. A. P. KITCAT (President) ; R. EGLINGTON (Vice Captain) ; W. R. KING. (On ground) P. C. BLACK ; VISCOUNT FRENCH.

SEPTEMBER 10th, 1938 ESHER (12 a-side)

B. J. A. LOWE	c. CONSTANTINE	b. GODDARD	68
R. EGLINGTON	c. ALLEN	b. HAIG	19
H. R. CROUCH	Not Out	110
G. T. HOLLEBONE	Not Out	65
Extras	3

declared 265 - 2

P. C. BLACK ; K. L. T. JACKSON ; R. J. WOOLLATT ; J. C. HUBBARD ; R. C. EGLINGTON ; VISCOUNT FRENCH ; W. E. GERRISH ; and W. R. KING did not bat.

B. H. LYON'S XII

P. G. H. FENDER	c. R. EGLINGTON	b. JACKSON	2
E. W. BROOKS	b. GERRISH	75
T. GODDARD	c. WOOLLATT	b. JACKSON	12
W. R. HAMMOND	c. HUBBARD	b. CROUCH	61
B. O. ALLEN	b. CROUCH	5
L. N. CONSTANTINE	c. R. C. EGLINGTON	b. CROUCH	5
N. HAIG	b. GERRISH	6
A. E. WILSON	c. BLACK	b. FRENCH	14
B. H. LYON	b. JACKSON	53
W. L. NEALE	Not Out	14
Extras	5
									252
for 9 wickets									252

R. SINFIELD and P. S. CLARKE did not bat.

At the outbreak of the Second World War the ground was handed over to the Training Battalion of the Welsh Guards who were established at Sandown Park and problems of maintenance were solved.

A few games were played—excepting 1942—chiefly against Military sides and one against an XI of County Players collected by L. FISHLOCK in aid of the Local War Savings Week.

As a result the ground was in good condition in 1945 when 25 matches were played after V.E. Day.

Esher were fortunately able to field much of their pre-war side in 1946 when LOWE scored over a thousand runs and H. F. STEVENS and R. D. JUPP batted with added maturity. The principal wicket-takers were again CROUCH and WOOLLATT. 1947 saw two new recruits, A. T. W. BLAIR, a great hearted fast medium bowler whose energy and club spirit has meant much in every succeeding year and who in 1962 took over command of the 2nd XI. The other, B. N. S. KIDSON with his quick footwork and ability to push his spinners through was a match winner. JUPP topped the thousand which he did again in 1949 with 1592 runs including a memorable 171 not out against DORSET RANGERS—and again in 1951.

In 1948 W. E. (Ebby) GERRISH who had been elected President the previous year—an office he still holds—was succeeded as Captain by CROUCH. He had been Captain or Vice Captain most years since 1925.

Exhibition matches were played, in which the Club were not disgraced, against B. H. LYON'S COUNTY XI in the first three post war years.

The three years of CROUCH Captaincy marked the rise of J. A. HARRISON and T. O. M. SIMPSON both powerful strikers of the ball—left and right respectively, the latter scoring his one thousand runs in 1957 and 1959.

It also saw the start of the DORSET and DEVON tour 1949 to 1955 when a home week, revived after 21 years took its place. Starting with a fixture against M.C.C. on the Monday, the week has since provided very attractive cricket. 1950 had W. R. HAMMOND, recently retired from his Captaincy of England, playing for Esher and heading the batting with an average of 81.

JUPP became captain in 1951 for three years and in the same year G. MORGAN started to play for Esher at an age when many would have been content to talk over past triumphs. This slow googly bowler and master of flight has taken more wickets than any other Club player every year since—over 100 each year from 1955 to 1960 with a record 152 victims in 1957 and he gave Esher an edge in attack that it previously lacked. The JUPP era also introduced A. N. DENNING, sound keeper and stubborn bat who was later to do good work as Secretary.

In 1954 and 1955 the side was led by W. J. (Jack) GERRISH and with some younger recruits the improvement in fielding, well maintained since, was noticeable. J. A. FULFORD—an attractive and prolific scorer and P. E. BODKIN (Capt. of CAMBRIDGE UNIVERSITY 1946) right hand bat and accurate left hand medium bowler—became members at this time.

In 1953 an additional strip of land was wisely purchased to provide better parking facilities and more amenities for the families of those who played and watched. The present wire enclosed practice wickets on the new land were available in 1955.

The following year was an important one in Esher history for P. G. WREFORD took over the Captaincy. He had played an increasing number of innings since 1949 when loyalty to DEVON and BRONDESBURY permitted. An outstanding Captain both on and off the field, much of Esher's present success is due to his leadership. A fighting cricketer he revels in tough situations and in his first full season for the Club in 1956 he scored the highest recorded aggregate 1689, and in every year since, except 1961, has exceeded four figures. The bowling was strengthened in 1957 by M. D. LIVOCK whose Father A. H. D. headed the batting in 1935. A genuine fast bowler he has some outstanding performances to his credit.

J. M. PARKER a left hander who keeps his head over the ball has claimed more than 4000 runs in his four full seasons and in addition is a good keeper and useful change bowler.

The Club have been well served behind the wicket since the war—B. R. M. HAYLES (Army) playing in the early years and today we have the Rector of Esher, REV. W. W. DAVIDSON (Oxford and the Navy) when he can spare the time; G. D. DEAN and J. C. W. RILEY among others. Comparative newcomers to the side are P. D. CROFT (Cambridge) and W. J. DOWNEY both well known in other games and who can both bat and bowl.

Another name to remember is J. HALLIWELL who although never a top flight player developed a fine *es prit de corps* in the second XI which he captained from 1957 to 1961, taking 225 wickets himself, and in 1960 won 19 matches against 7 lost—a record for the Junior side.

Another innovation—in 1957—were professional umpires, who have served the Club well.

This is intended to be a short history of 100 years and there are many fine cricketers both past and present whose names have not been mentioned.

Earlier mention has been made of the formation of the COLTS CLUB in 1929. This has been of tremendous service and on a recent occasion 10 of the first XI had been ESHER COLTS and their big match, against the Club, when the selected COLTS receive their caps is keenly anticipated. Some 30 matches are played during August and September and games are arranged under 14, 15 and 16 as well as the major games for those who had not left School at the start of the season. These games need organisation off the field and the Club owes a great debt to R. D. RILEY—a Vice President and Father of J. C. W. and A. J. S.—and to SIMPSON who for many years have provided this background. The advice of Schoolmaster G. E. HARTLEY has also been most helpful.

Pages 6 and 7 depict those taking part in the CLUB v COLTS match 1962.

ESHER

M. G. LASKEY ; P. BOREHAM ; H. HARRISON ; I. GAVIN-BROWN ; S. J. DAWSON ; E. J. TIMPERLEY ;
G. E. HARTLEY ; J. M. PARKER ; W. E. GERRISH (President) ; P. G. WREFORD (Capt.) ; A. C. HEWETT ;
G. D. DEAN.

COLTS

C. COLEY ; J. BENSON ; N. J. P. BRUNT ; B. OLLIFF ; T. WILLIAMS ; I. FISHER ; R. CHOVIL ; G. A. COTTRELL ;
J. HOPPER (Capt.) ; G. H. KEMP ; H. E. NICHOLS.

One final word is the thought that Esher are proud of being a local Club. Support may come from all who love Cricket but playing membership is only encouraged from those who live or have lived in the area with just a little elasticity as to its boundary.

The Pavilion has twice been extended during recent years and when the game is over all our membership, which includes quite a few ladies, are welcome.

Apart from cricket, the Social Occasion is the Club Ball which, but for the War, has been held every year since 1935 at ST. GEORGES HILL, WEYBRIDGE. Those who attended the Ball in Coronation Year 1953, will have a never to be forgotten memory of an epic occasion. May we hope that the CENTENARY BALL ten years later, on Friday of WHIT WEEKEND 1963, will provide an equal measure of happiness and gaiety.

W.E.G.

The averages are almost complete since 1925 and we record in alphabetical order and in no spirit of VICTOR LUDORUM, those who, by scoring 2000 runs or taking 200 wickets, have given pleasure to others and we hope to themselves, together with the dates of their first and last or latest appearance for the Club.

ESHER C.C.

Battting 1925 to 1962

		Over 2,000 runs						
	First Inn.	Last Inn.	Name	Inn.	Not Outs	Highest Score	Runs	Ave.
Pre	1925	49	E. A. ALEXANDER ..	275	55	63	2,149	9.77
	1933	55	P. C. BLACK	251	39	100	3,511	16.56
	1947	62	A. T. W. BLAIR	240	57	61	2,252	12.31
	1955	62	P. E. BODKIN	118	20	103*	3,156	32.20
	1952	62	C. H. BRIGGS	224	17	89*	3,742	18.08
	1932	61	H. R. CROUCH	358	46	206*	11,705	37.52
	1951	61	A. N. DENNING	212	47	111	3,294	19.97
	1949	61	R. DODD	162	18	108*	2,860	19.86
	1943	52	L. C. DORMAN	96	3	92	2,427	26.09
	1925	52	R. EGLINGTON	220	13	152	6,151	29.71
	1928	56	R. C. EGLINGTON	341	21	123	5,068	15.84
	1955	62	J. A. FULFORD	216	16	141*	6,310	31.55
	1925	53	W. E. GERRISH	363	90	110*	5,017	18.30
	1943	62	R. E. C. GOLDSMITH	364	20	96*	5,711	16.66
	1947	62	J. A. HARRISON	305	26	148	6,915	24.78
	1952	62	A. C. HEWETT	170	18	104	2,791	18.36
	1933	46	G. T. HOLLEBONE	82	5	95	2,135	27.99
	1929	46	C. HOWE	194	7	81	3,351	17.92
	1935	52	J. C. HUBBARD	144	20	131	2,694	21.72
	1925	39	A. J. JENKINS	244	27	107	4,528	20.87

Batting 1925 to 1962

Over 2,000 runs

First Inn.	Last Inn.	Name	Inn.	Not Outs	Highest Score	Runs	Ave.
1939	54	R. D. JUPP	248	19	171*	7,808	34.09
1938	54	B. N. S. KIDSON	153	18	121*	3,457	25.61
1937	57	B. J. A. LOWE	296	21	110	8,388	30.28
1931	48	N. A. MACIVER	78	6	130	2,030	28.19
1930	47	H. A. PACKHAM	175	21	130*	4,711	30.52
1952	62	J. M. PARKER	142	12	133*	4,487	34.51
1947	59	H. F. PEARSE	188	27	80	2,016	12.52
1927	49	T. A. RYDER	225	22	136*	3,269	16.10
1935	62	C. J. SAGE	203	13	118*	3,664	19.27
1946	62	T. O. M. SIMPSON	349	28	124	8,027	25.08
1952	62	J. C. A. SMITH	220	37	80*	2,942	16.07
1930	43	A. C. STAINES	169	10	77	2,021	12.71
1925	47	E. A. STAINES	200	13	95	2,254	12.05
1938	48	H. F. STEVENS	113	4	126	2,836	26.02
Pre 1925	53	J. A. TALBOT	303	48	53*	2,320	9.09
1949	62	D. R. WAGSTAFF	155	22	70*	2,318	17.28
1930	48	A. S. WELLAND	266	20	129	5,923	24.08
1951	60	L. WILLIAMS	141	14	101*	2,920	22.99
1929	59	R. J. WOOLLATT	325	29	146	7,490	25.30
1949	62	P. G. WREFORD	343	47	134	11,444	38.66

* Not Out.

Scam's father →

BOWLING

Over 200 wickets		(Most overs from 1939 to 1946 were 8 ball)							
	First Bowled	Last Bowled	Name	Overs	Maidens	Runs	Wkts	Ave.	
Pre	1925	49	E. A. ALEXANDER ..	2,443	264	8,685	580	14.98	
	1947	62	A. T. W. BLAIR ..	4,541.5	879	13,826	693	19.92	
	1955	62	P. E. BODKIN ..	2,046.5	576	4,719	324	14.56	
	1952	62	C. H. BRIGGS ..	1,294.1	243	3,959	206	19.22	
	1956	62	D. F. COX ..	1,337.5	273	3,816	230	16.59	
	1932	61	H. R. CROUCH ..	4,539.5	928	13,202	860	15.35	
	1949	61	R. DODD ..	1,110.3	168	3,604	292	12.34	
	1928	56	R. C. EGLINGTON ..	3,780	700	11,552	703	16.43	
	1925	51	W. E. GERRISH ..	2,667.2	300	10,118	649	15.59	
	1950	62	J. A. HALLIWELL ..	1,834.2	389	5,194	298	17.47	
	1935	52	J. C. HUBBARD ..	1,490	279	4,974	272	18.28	
	1939	53	R. D. JUPP ..	1,354	228	4,740	213	22.25	
	1938	54	B. N. S. KIDSON ..	1,703	275	5,871	323	18.17	
	1953	62	M. D. LIVOCK ..	1,632.2	397	3,951	329	11.72	
	1951	62	G. MORGAN ..	5,773.1	746	19,766	1,270	15.56	
	1929	51	R. PEAKE ..	2,297.4	298	7,645	497	15.38	
	1947	59	H. F. PEARSE ..	2,101.5	443	6,057	405	14.95	
	1935	62	C. J. SAGE ..	1,430.2	179	4,513	210	21.49	
	1925	37	S. W. SMITH ..	978.1	144	3,031	246	12.22	
Pre	1925	53	J. A. TALBOT ..	2,450	284	8,339	475	17.57	
	1929	55	R. J. WOOLLATT ..	2,705	471	8,807	457	19.25	